

FRIDAY, SATURDAY, SUNDAY • SEPTEMBER 4-6

2015
INTERNATIONAL
WFTDA®

PLAYOFFS



TUCSON, ARIZONA

Hosted by:



WOMEN'S FLAT TRACK DERBY ASSOCIATION

2015
INTERNATIONAL
WFTDA®

TOURNAMENTS



There's heart,
and then there's
ROLLER DERBY
Heart.

Before the lights are up, before the cameras roll, our WFTDA athletes are out there training in preparation. Sacrificing days, nights and weekends, each practice means missing time with friends and family. Throughout the year, they willingly embrace countless hours of blood, sweat and tears—plus injuries, setbacks, and failures. All on the road to this moment.

On WFTDA.tv, we know that every hit, every lead change represents months of sacrifice and dedication. We're proud to showcase our WFTDA athletes, so that when it's time for the game, the most important thing you see on your screen is the heart.

WFTDA.tv will be there, broadcasting live from the international Playoffs and Championships in 2015.

LIVE IT  STREAM IT. LIVE.



WFTDA.tv

August 21-23 | Cleveland, OH | \$12.00
August 28-30 | Detroit, MI | \$12.00

September 4-6 | Tucson, AZ | \$15.00
September 11-13 | Dallas, TX | \$15.00
September 18-20 | Jacksonville, FL | \$15.00
October 2-4 | Omaha, NE | \$15.00

November 6-8 | St. Paul, MN | \$22.50

D1 Playoffs + Championships
BUNDLE | \$60

Welcome

2015 WFTDA DIVISION 1 PLAYOFFS HOSTED BY TUCSON ROLLER DERBY

On behalf of the WFTDA Board of Directors, Officers, and staff, I am excited to welcome you to the 2015 International WFTDA Division 1 Playoffs. There's nothing quite like a live roller derby tournament: the tantalizing goods at the vendor tables; the rumble and squeak of wheels on the track; the electrifying roar of a cheering crowd. Energy and emotions are alive throughout the venue as games are anticipated, victories celebrated, and losses despaired. While old friendships are kindled and new rivalries spark, the derby community celebrates its power, celebrates power, and strengthens bonds.

This is why we love it. This is why we live it.

Whether you're a Skater, Official, photographer, announcer, or fan (or any combination thereof), we're glad you've chosen to live derby this weekend!

This weekend wouldn't be possible without the tremendous amount of support and time our hosts, Tucson Roller Derby, and all of their volunteers have put in. When you see their event staff, be sure to thank them for hosting such a fantastic tournament.

Enjoy your time in Tucson and we'll see you 'round the track!

Alisha Campbell

WFTDA Tournaments Director



2015
INTERNATIONAL
WFTDA®

TOURNAMENTS



LIVE IT  STREAM IT. LIVE.

AUG. 21-23 - CLEVELAND, OHIO

HOSTED BY BURNING RIVER ROLLER DERBY

AUG. 28-30 - DETROIT, MICHIGAN

HOSTED BY DETROIT DERBY GIRLS

SEPT. 4-6 - TUCSON, ARIZONA

HOSTED BY TUCSON ROLLER DERBY

SEPT. 11-13 - DALLAS, TEXAS

HOSTED BY DALLAS DERBY DEVILS

SEPT. 18-20 - JACKSONVILLE, FLORIDA

HOSTED BY JACKSONVILLE ROLLERGIRLS

OCT. 2-4, 2015 - OMAHA, NEBRASKA

HOSTED BY OMAHA ROLLERGIRLS

CHAMPIONSHIPS

NOV. 6-8 - SAINT PAUL, MINNESOTA

HOSTED BY MINNESOTA ROLLERGIRLS



I AM WFTDA. I AM DERBY.

Schedule of Events

2015 WFTDA DIVISION 1 PLAYOFFS

HOSTED BY TUCSON ROLLER DERBY

FRIDAY

SEPTEMBER 4, 2015

9 am **DOORS OPEN**

10 am Game 1 **Terminal City Rollergirls (#7) v Tri-City Roller Derby (#10)**

12 pm Game 2 **Arizona Roller Derby (#8) v Mad Rollin' Dolls (#9)**

2 pm Game 3 **Arch Rival Roller Girls (#3) v Team United Roller Derby (#6)**

4 pm Game 4 **Bay A.rea D.erby Girls (#2) v Winner G1**

6 pm Game 5 **Victorian Roller Derby League (#1) v Winner G2**

8 pm Game 6 **Rocky Mountain Rollergirls (#4) v Charm City Roller Girls (#5)**

SATURDAY

SEPTEMBER 5, 2015

9 am **DOORS OPEN**

10 am Game 7 **Loser Game 2 v Loser Game 3**

12 pm Game 8 **Loser Game 1 v Loser Game 6**

2 pm Game 9 **Winner Game 3 v Winner Game 4**

4 pm Game 10 **Loser Game 4 v Winner Game 7**

6 pm Game 11 **Loser Game 5 v Winner Game 8**

8 pm Game 12 **Winner Game 5 v Winner Game 6**

SUNDAY

SEPTEMBER 6, 2015

9 am **DOORS OPEN**

10 am Game 13 **Loser Game 7 v Loser Game 8 (9th Place)**

12 pm Game 14 **Loser Game 10 v Loser Game 11 (7th Place)**

2 pm Game 15 **Winner Game 10 v Winner Game 11 (5th Place)**

4 pm Game 16 **Loser Game 9 v Loser Game 12 (3rd Place)**

6 pm Game 17 **Winner Game 9 v Winner Game 12 (1st Place)**

7:30 pm **AWARDS CEREMONY**



Arch Rival Roller Girls



Arizona Roller Derby



Bay A.rea D.erby Girls



Charm City Roller Girls



Mad Rollin' Dolls



Rocky Mountain Rollergirls



Team United Roller Derby



Terminal City Rollergirls



Tri-City Roller Derby



Victorian Roller Derby League

From WFTDA

TOURNAMENT RULES

GUEST CODE OF CONDUCT:

The Women's Flat Track Derby Association strives to provide a safe and satisfying event for everyone in attendance by seeking your compliance with our guest code of conduct. We ask for your assistance in creating an environment that is free of:

- Abusive or foul language and obscene gestures directed toward other guests, venue employees, tournament staff and volunteers, players, coaches, and officials.
- Guests who are disruptive to the event or impair other guests' enjoyment.
- Intoxicated or drug-impaired individuals.
- Smoking, except in designated areas (located outside of the arena).
- Prohibited entry items such as outside food & beverage, weapons, non-service animals, air horns, vuvuzelas, megaphones, and laser pointers, and other items deemed inappropriate, harmful or hazardous by tournament staff.
- Professional cameras, video cameras, and audio recorders are prohibited without prior authorization and proper credentials.
- Guests without proper authorization or credentials entering or attempting to enter restricted areas.
- Banners or signs that obstruct the view of guests, obscure sponsor advertising, contain objectionable subject matter, or are commercial in nature. The WFTDA and the venue reserve the right to remove any banner or sign at any time.

Guests not abiding by this Guest Code of Conduct are subject to ejection from the venue. In the event that you are refused entry into or requested to leave the venue for failure to comply with the Guest Code of Conduct or follow the venue regulations, you will not be entitled to a replacement or refund for your ticket. Entry to the venue shall constitute acceptance of the Guest Code of Conduct and venue regulations.

PLEASE TAKE NOTE OF A FEW TOURNAMENT RULES:

- No video or audio recording devices or cameras with detachable lenses without prior approval from the WFTDA. Please visit wftda.com/tournaments/ credentials for more information.
- If you choose to sit trackside, you accept all responsibility for the possible risk of injury to you, or damage and/or destruction to your belongings at any time without warning. Trackside seating is at your own risk.
- Chairs are not permitted trackside except as a companion to ADA accessible seating. Wheelchairs (and their companion chair) must be a minimum of five feet away from the outside referee lane.
- Glassware, sharp objects, and other items deemed inappropriate, harmful or hazardous by tournament staff are not allowed in trackside seating.
- You must remain seated in the trackside seating area. Laying down is not permitted. Keep your hands, feet, and belongings behind the safety line at all times. Do not touch or grab Skaters or Officials who fall into trackside seating. If a piece of clothing or equipment falls onto the track, do not enter the track or safety lane to retrieve it.
- Fire lanes, exits, and walkways must remain clear.
- Certain areas of the track and venue are reserved for individuals who require special seating or perform specific game duties. They may obstruct the view of persons behind them. However, they are not able to move, sit, squat, or otherwise alter their position lest they not be able to complete their job function.
- By entering the venue, you agree to the possibility of being photographed, filmed or recorded. Your voice, image and likeness may be captured and recorded in and around the venue and publicly disseminated by any means and in any format or media. You waive all rights on an irrevocable, worldwide, perpetual basis to object to such recording and dissemination.

From Your Host

WELCOME TO TUCSON

2015 INTERNATIONAL WFTDA D1 PLAYOFFS

Welcome to the Old Pueblo! **Tucson Roller Derby** is excited to host the 2015 Division 1 Playoff Tournament in our beautiful and diverse city.

The venue, the Tucson Convention Center (TCC), has been hosting large and exciting events since 1971. The TCC has hosted events ranging from collegiate ice hockey to WWE specials and monster truck shows to the Tucson Gem & Mineral Show. While TRD has hosted games and tournaments at the venue before, the 2015 Division 1 Playoff Tournament is by far the most high-profile WFTDA event to take place at the TCC to date. With the building having recently been renovated, the main arena provides a wonderful setting for skaters to compete and spectators to watch.



The city of Tucson is 2389 feet above sea level and covers nearly 500 square miles. The landscape is varied and includes flowering desert, rolling hills, winding dry riverbeds, rugged canyons and pine-topped peaks, all beneath a clear, blue sky. Scenery on the 60-minute drive from downtown

Tucson to the top of our highest mountain peak, Mt. Lemmon, is like what you'd see on a trip from Mexico to Canada.

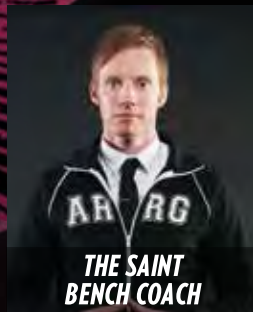
Please note: The tournament takes place during the end of our summer monsoon season, when thunderstorms, lightning, and heavy rains are prevalent. The monsoon season is one of the most exciting times in Tucson, however you should be careful to take the proper precautions. These storms can roll in fast. During a storm, try to enjoy watching it from a safe place, either inside or a covered area. Streets, ditches, and washes can flood quickly during these storms, so please pay attention to road signs that warn you not to enter an underpass or wash when flooded. Tucson temperatures can range anywhere from 90-110 degrees Fahrenheit during September with overnight lows in the 60s and 70s. ALWAYS carry water with you, along with sunscreen and a hat if you're outside.

The tournament takes place in Downtown Tucson, providing a spectacular view of the 5 mountain ranges that surround the city from almost every angle. You should take some time explore many of the outdoor offerings while you are here; you can choose to travel various paths and trails via walking, running, skating, biking, or even horseback to explore the Old Pueblo and surrounding areas.

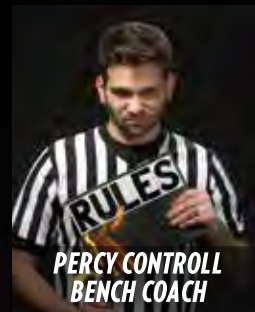
Tucson Roller Derby hopes you enjoy your time in Arizona!



ARCH RIVAL ALL STARS



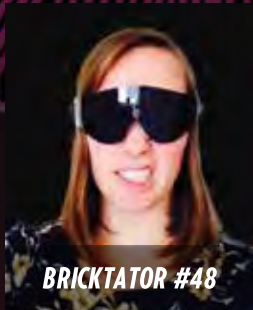
THE SAINT
BENCH COACH



PERCY CONTROLL
BENCH COACH



SHANE BOWER
BENCH COACH



BRICKTATOR #48



BRICKYARD #400



CHEWBLOCKA #1138



CLOAK N' DRAG-HER
#1900



CUPQUAKE #24



GRAVE DANGER #6FU



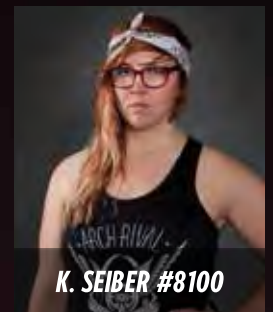
HARMONY KILLERBRUISE
#75



JAMHEISER BUSH #33



K. GRANT #500



K. SEIBER #8100



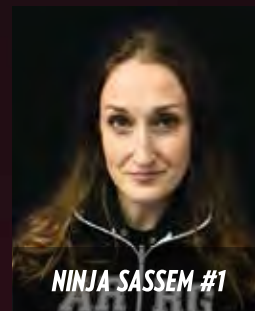
K. WING #811



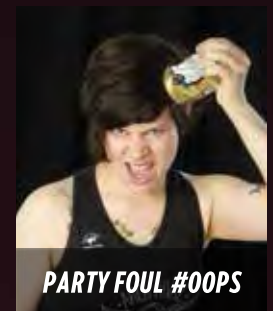
MAYOR FRANCIS SLAYER
#4



MIGHTY MIGHTY BOSTON
#M2



NINJA SASSEM #1



PARTY FOUL #OOPS



RINEHART #530



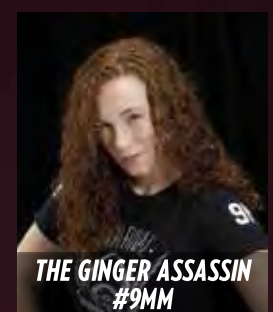
SHEAR-RA POWERS
#1057



SHIMMY HOFFA #299



SWANSON #68



THE GINGER ASSASSIN
#9MM

Where We Skate



PHOTO CREDIT: www.tucson.com

Tucson Convention Center

260 S Church Ave
Tucson, AZ 85701

www.tucsonaz.gov/tucson-convention-center

PARKING

The Tucson Convention Center (TCC) has 1,000 parking spaces that may be utilized for event parking, but most of the closer lots cost \$8. In addition to guest vehicle parking, the TCC can accommodate limousine, truck and RV parking based upon availability. The TCC accepts cash and all major credit cards.

There are several parking garages (most ranging from \$2 to \$8, either by the hour or flat rate) and on street parking (\$1/hour or free after 5 PM and on weekends and holidays) in the area that can be utilized, as well. We suggest not parking in the residential areas because many of the neighborhoods require residential parking permits.

www.tucsonaz.gov/files/tcc/TCC_Map_13.pdf

SECURITY

There will be hired security personnel and volunteer security staff from TRD to attend to crowd control and general security matters. You are advised not to leave valuables unattended as neither the WFTDA, TRD, nor the Tucson Convention Center will be responsible for loss, damage, or theft of your belongings. Any property you bring to the event is done so at your own risk.

FOOD AND BEVERAGE

No outside food or beverage will be allowed into the venue.

RULES AND RESTRICTIONS

- All purses, bags and cases are subject to search.
- The Tucson Convention Center is a smoke-free venue.
- Any item that is dangerous, hazardous and/or illegal or that may be used as a weapon, compromise or otherwise interfere with the enjoyment, comfort or safety of any person or pose risk to security at the venue, or any other item that WFTDA event officials or Tucson Convention Center officials determine (in their absolute discretion) may cause injury or public nuisance or inconvenience to any other person is strictly prohibited.
- No animals other than guide, signal or service animals (as defined by law) are allowed in the Tucson Convention Center. All sanitary needs for permitted animals are the responsibility of the customer.
- Neither the Tucson Convention Center, the WFTDA, nor the Tucson Roller Derby will be liable for any loss, damage, or harm (of any kind, including to any person or any property) arising from your presence at the event and you agree that no claim, complaint, or proceeding will be brought in this regard.
- You are responsible for any property you bring to the event and such property is at your own risk. Your presence and/or movement in and around the event is at your own risk.
- The Tucson Convention Center is wheelchair accessible. If you require further accommodations, email tickets@wftda.com.

TENT CITY TERRORS

ARIZONA ROLLER DERBY



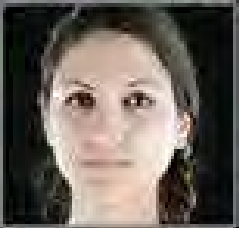
#175
CHONE YA LAYTE



#3
CANNIBELLE CORPSE



#56
DEEZ NUTZ



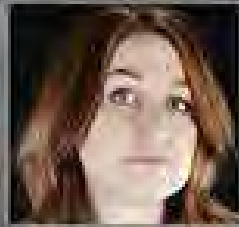
#1111
DÉJÀ DÉJÀ VU



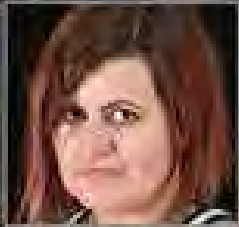
#317
BLOK N' DEXNER



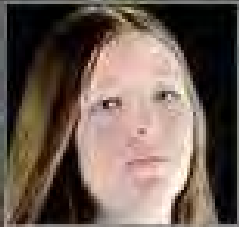
#57
GINGERSAURUS WREX



#9 GINGER
'REEKING' HAVOC



#789
HFACE KILLA



#22
KITCH



#5150
LOCO LENA



#45
AMINISHA



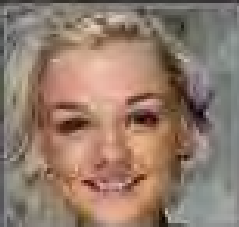
#242
R2DEATH2



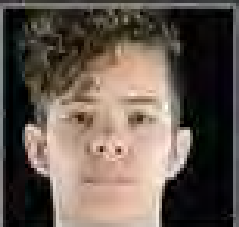
#38
COLETTE RAZORCAT



#1208
TOASTER



#4
CARBOMB YA



#924
LUZ CHAOS



BC
FRED NUTZ



BC
PARDON MY FRENCH

ABOUT THE WFTDA

The Women's Flat Track Derby Association—comprising 316 member leagues and 98 apprentice leagues—is the international governing body for the sport of women's flat track roller derby and a membership organization for leagues to collaborate and network. The WFTDA sets standards for rules, seasons, safety, and determines guidelines for the national and international athletic competitions of member leagues. The WFTDA is governed by a five-member, volunteer Board of Directors:

ALASSIN SANE, Detroit Derby Girls

President and IT Oversight

AMY SPEARS, Ohio Roller Girls

Vice President and Membership Oversight

EDUSKATING RITA, Hammer City Roller Girls

Secretary, Juniors and Regulatory, & Governance Oversight

MS. D'FIANT, Angel City Derby Girls

Treasurer, Games, and Insurance Oversight

GRACE KILLY, Brewcity Bruisers

Ex Officio and Marketing Oversight

KEEP IN TOUCH WITH THE WFTDA

The Playoffs and Championships may be the highlight of the WFTDA season, but we've got news to share with roller derby fans all season long!

- Stay up to date with all things WFTDA via **WFTDA.com**. Want to make sure you don't miss an update? Subscribe to our RSS feeds or our e-newsletter.
- Relive the tournaments with archived footage on **WFTDA.tv** and keep an eye out for announcements about next year's WFTDA.tv season. Follow **@WFTDAlive** for live tweets of WFTDA.tv events and look for highlight clips on our YouTube channel.
- Join the conversation on our social media communities. The WFTDA is on Facebook, Twitter, Google+, Tumblr, Pinterest, and LinkedIn. Visit **wftda.com/connect**.
- Tweeting or Instagramming about your adventures at the Playoffs? Use the hashtags **#WFTDAplayoffs**, **#downtownTucson**, **#Tucson**, and **#keeptucsonparty**
- Want to "talk" to the announcers during the tournament, tweet them at **#Talk2WFTDA**.

2015

BAY AREA



ALL STARS

DEMANDA RIOT	000	45	DOLLY ROCKET
LIZA MACHETE	1	52	KID ACE
SKRAPPIE	5	61	PRESSURE COOKER
MURDERYN MONROE	7	86	GRETCHEN VOMETTE
HUCK SINN	10	140	LITHIUM
STEELY JAN	19	201	SWEET SHERRY PIE
EVA MENACE	20	222	FLUEZY
LULU LOCKJAW	21	405	DIRTY LIL TRICK
DUAL HITIZEN	29	888	BRAWLLEN ANGEL
FRIGHTMARE	31	999	AMANDA JAMITINYA
SKATELYN	36	1619	BELLE RIGHT HOOKS



TIME TO EAT!

Downtown Tucson has experienced a significant increase in restaurant choices over the last few years. While Tucson is the Mexican food capital of the US, our city has a diverse population and its restaurants reflect that, from steaming bowls of authentic Vietnamese pho to several kinds of Middle Eastern cuisine. Vegetarians, vegans, and paleos eat very well here, as do folks who like nothing better than a juicy burger. Most of the places listed below are located close to the venue/hotels, and are easy to get to by walking, using the Tucson Streetcar, or driving a few miles.

MEXICAN AND REGIONAL CUISINE

Mercado San Agustin (100 S Avenida del Convento) - Located on the west end of the streetcar route, this marketplace features several shops, restaurants, and a farmer's market that is open on

Thursday afternoons. Restaurants include - **Seis Kitchen and Catering, La Estrella Bakery, Sonoran Sno-Cones, & Stella Coffee Bar. Tania's 33** (614 N Grande Ave): vegan, vegetarian, and meat taco and burrito options. Also killer breakfast burritos! If you're a meat eater and haven't yet heard of the Sonoran Hot Dog, now is the time to try it!

AMERICAN FARE

Reilly's Craft Pizza and Drink (101 E Pennington St) - Built in a renovated funeral home, Reilly's also boasts an outdoor beer/wine garden and an underground speakeasy style bar called **The Tough Luck Club. Lindy's on 4th** (431 N 4th Ave) - Creative burgers such as the Mac and Cheese, Velvet Hammer (with a fried egg!), and the Blue Suede Cow (with peanut butter and bacon - sounds weird but it's surprisingly good!).

AFTER PARTY!

FRIDAY, SEPTEMBER 4, 10 PM - CLOSE

Playground Bar and Lounge
278 E Congress St
(520) 396-3691

Playground can be a popular place on Friday nights, but if you say you're with WFTDA, you can skip the line to get in. Ask for the "\$5 roller derby special," which includes a pint of Dragoon IPA (locally brewed!) and a shot of tequila. 21+

SATURDAY, SEPTEMBER 5, 10 PM - CLOSE

Che's Lounge
350 N 4th Ave
(520) 623-2088

Cheap drinks, great art, great jukebox. Dive bar atmosphere on 4th avenue with a large outdoor patio. WFTDA Drink Specials on Fireball Whiskey and PBR. 21+

SUNDAY, SEPTEMBER 6, 9 PM - CLOSE

Surly Wench Pub
424 N 4th Ave
(520) 882-0009

Tonight's after party will feature Derby Karaoke! The Surly Wench Pub is Tucson's favorite lowbrow destination for booze, music, and food. Tasty eats, huge selection of beer and liquor, with nightly drink specials. 21+



COLLEEN BEST
1001



HITTSBURGH
6



MR PISTOL
BENCH COACH



BLIND BANSHEE
BENCH COACH



ALLIE B. BACK
T2



SCARIETT TUBMAN
41



CHERRYLICIOUS
NC17



FEDERAL KILL
2



FERAL KAT
14



FREE RADICAL
8



GG HARDY
30G



SHE-BEAR
2873



HOLLY GOHARDLY
415



I.M. PAIN
1618



LADY QUEBEAUM
34



LORETTA SCARS
91



NIKI CASH
127



RAVEN DARKHOLD
178



MARY BUSCH
123



DOTTIE DEATHWISH
514



ZHA CRAZY KRAUT
199

PHOTOS COURTESY TYLER SHAW/PRINTS CHARMING

DID YOU KNOW?

INTERESTING FACTS ABOUT TUCSON

Arizona only became a state in 1912, and the region—formerly part of Mexico—wasn't even a U.S. territory until the 1840s. The area is also one of the earliest inhabited areas of the country, with evidence of Hohokam settlements dating back thousands of years. All of these elements make Tucson one of the most culturally rich cities of the West with a distinctive lens into America's past.

Countless Hollywood movies have been filmed here along the rustic boardwalks, against rugged mountain ranges. Reminders of the untamed frontier—the railroad depots and mines, saloons, jails, gunslingers, and dance-hall singers—can be found in real towns throughout Southern Arizona.

The underpass that links Fourth Avenue to Congress Street features the portraits of more than 7000 Tucsonans (and a few of their canine companions). Photographed in 2009, they are now preserved forever—or at least for a really long time—in tile.

CUSTOM MERCHANDISE FROM SOMETHINGINKED



-100's of thousands of products

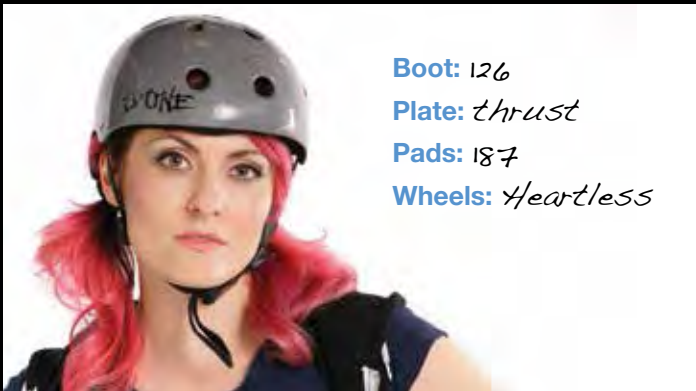
-Incredible in-house art team

-Top notch customer service from start to finish

-Net 30 payment terms available (must qualify)

SPECIAL DERBY PRICING COURTESY OF THE WFTDA

Contact: Chad Barlow - chadb@somethinginked.com - 989-714-0020

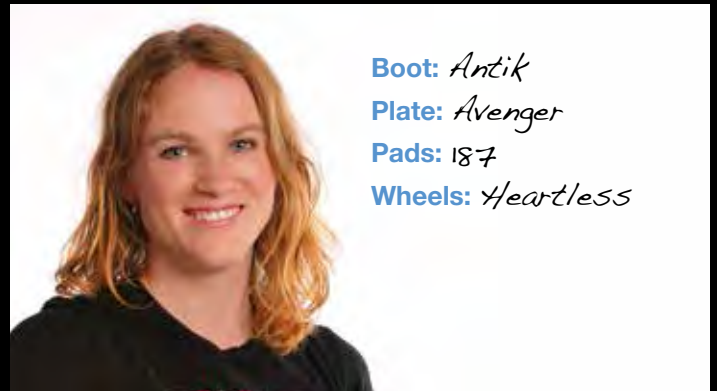


Boot: 126

Plate: thrust

Pads: 187

Wheels: Heartless



Boot: Antik

Plate: Avenger

Pads: 187

Wheels: Heartless

IT'S ABOUT YOU.



"Serving Skaters of all Shapes/Sizes since 2007"

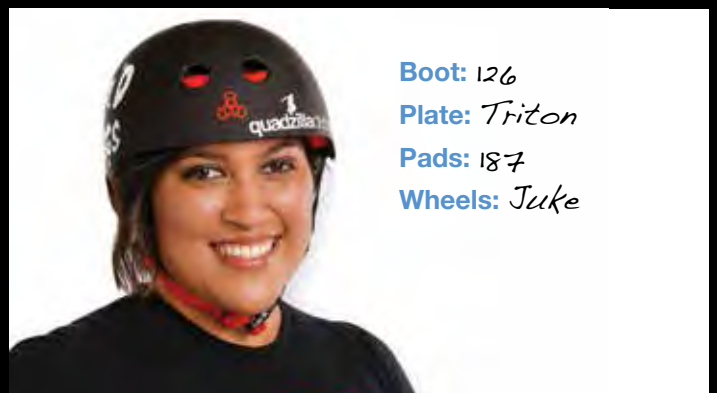


Boot: Antik

Plate: Avenger

Pads: Triple 8

Wheels: Atom



Boot: 126

Plate: Triton

Pads: 187

Wheels: Juke



Victorian Roller Derby League

Seed 1

GAME 5
FRIDAY 6:00 PM



Arizona Roller Derby

Seed 8

GAME 2
FRIDAY 12:00 PM



Mad Rollin' Dolls

Seed 9



Rocky Mountain Rollergirls

Seed 4

GAME 6
FRIDAY 8:00 PM



Charm City Roller Girls

Seed 5



Arch Rival Roller Girls

Seed 3

GAME 3
FRIDAY 2:00 PM



Team United Roller Derby

Seed 6



B.ay A.rea D.erby Girls

Seed 2



Terminal City Rollergirls

Seed 7

GAME 1
FRIDAY 10:00 AM



Tri-City Roller Derby

Seed 10

Loser Game 5
GAME 11
SATURDAY 6:00 PM

Loser Game 1
GAME 8
SATURDAY 12:00 PM
Loser Game 6

Loser Game 4
GAME 10
SATURDAY 4:00 PM

Loser Game 2
GAME 7
SATURDAY 10:00 AM
Loser Game 3

CONSOLATION BRACKET

Hosted by:



FRIDAY, SATURDAY, SUNDAY
SEPT. 4-6
TUCSON, AZ

WFTDA.com/Tucson

2015
INTERNATIONAL
WFTDA

PLAYOFFS

LIVE IT  STREAM IT. LIVE.

12
PM

GAME 17
SUNDAY 6:00 PM

CHAMPION

2nd PLACE

9
PM

Loser Game 12

GAME 16
SUNDAY 4:00 PM

3rd PLACE

Loser Game 9

4th PLACE

GAME 15
SUNDAY 2:00 PM

5th PLACE

6th PLACE

Loser Game 11

GAME 14
SUNDAY 12:00 PM

7th PLACE

Loser Game 10

8th PLACE

Loser Game 8

GAME 13
SUNDAY 10:00 AM

9th PLACE

Loser Game 7

10th PLACE

Games in Mountain Standard Time.



Mad Rollin' Dolls

2015 ALL STARS



ALLIE GATOR 18FT
 AMAGNITUDE 10 T3N
 DARLING NIKKI 14
 GLOCK NESS 565
 HOPPE GO LUCKY 222
 LADIE WHOHA 31
 LIPS MACKER 155
 MACK THE KNIFE 15
 MAGIC MISSILE D4
 MOUSE 4
 SHANANAGUNS (C) 9MM

SPROUT'N A TAIL 10IN
 SUSIE HOMEWRECKER 350
 TIPSY VELVET 255
 PRETTY RECKLESS COACH

Not Pictured:
 BROKEBACK JAC L5
 FANG DANGLED BIT
 KNOCKINGJAY 1213
 SPLATTER ALICE 987
 THRILL SHOW 80



DERBY BASICS

Two 14-skater teams play two 30-minute periods. Each period consists of multiple "jams." Each jam is an opportunity for both teams to score points. A jam lasts two minutes unless the Lead Jammer calls it off herself.

It is legal for a player to block her opponents with her hips, rear, and shoulders. It is not legal to block to the back, to trip, or to elbow another skater. Players committing illegal actions go to the penalty box for 30 seconds while their team plays short.



© 2014 Women's Flat Track Derby Association (WFTDA)



JAMMER

Jammers wear a star on their helmets and are the scoring players for each team. The Jammers attempt to pass the opponents as many times as possible by sprinting around the track and lapping the pack.



PIVOT

The Pivot is the Blocker that wears the stripe on her head. She is the only Blocker that is allowed to accept a star pass from the Jammer, thus becoming the new Jammer and gaining the ability to score points.



BLOCKER

The Blockers are simultaneously focused on stopping the opposing Jammer from passing them and assisting their Jammer to pass the opposing team's Blockers. The pack is formed by the largest group of Blockers with players from each team on the track.

Penalties



Back Block



Low Block



Track Cut



Out of Play



Multiplayer Block



Insubordination

ABOUT WFTDA

The Women's Flat Track Derby Association (WFTDA) is a membership association for female roller derby leagues playing flat track roller derby worldwide. The WFTDA offers benefits and support to member and affiliate leagues, and provides guidance and resources to the sport of flat track derby. Currently, the WFTDA represents tens of thousands of athletes and officials, in North and South America, Europe, Asia, and Australia, and is recognized as the guiding authority on the sport.

WFTDA.COM





2015

5280 FIGHT CLUB

photos by April O'Hare & Dave Wood



Rocky Mountain
ROLLERGIRLS

Rocky Mountain
ROLLERGIRLS



86

Assaultin' Pepa



555

Barbie Boop



37

Bob Loblaw



12

Bones Patrol



138

Devastator



31

Fiona Grapple



422

Gaygan



147

Havoc



13

Jersey Whirl



99

May Q. Pay



22

Phantom Menace



33

Sharon Tacos



88

She Who Cannot Be Named



55

Susy Pow



M80

Sweet Mary Pain



1896

Tootsie Roller



7423

Triple Shot Misto



9

Über Alice



949

Wild E. Coyote



8

Wüونا Fighter



BENCH

davelnci



BENCH

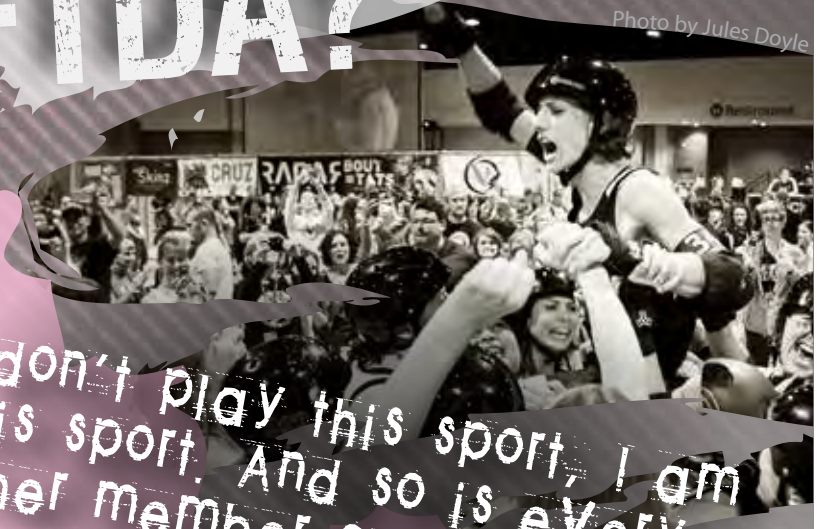
Raven LunaChic

WHY WFTDA?

Photo by Jules Doyle

The Women's Flat Track Derby Association (WFTDA) is the international governing body for the sport of women's flat track roller derby and a membership organization for leagues to collaborate and network. The WFTDA sets standards for rules, seasons, and safety, and determines guidelines for the international athletic competitions of member leagues.

I don't play this sport, I am this sport. And so is every other member of the WFTDA.
- Grace Kilby



- WFTDA leagues benefit from an organized, **international** support network. The WFTDA provides a platform for leagues to share resources.

- The WFTDA enables international competition and organization without forcing leagues to lose their individual principles, providing structure with flexibility.

- Member leagues and their individual skaters ARE the WFTDA. By being a part of a member league, each skater has:

- A say in the future of the sport. Operating under the "by the skaters, for the skaters" principle, member league representatives guide the WFTDA's direction.

- A way to help design and define the rules. Anyone can play by WFTDA rules, but member leagues decide what those rules will be.

- Education, through the Apprentice Program, Officiating Clinics, officials Certification and more!

- Opportunities for tournament play. The WFTDA has upped the competition with seven tournaments in 2013. Members have the chance to help host and participate in these tournaments.

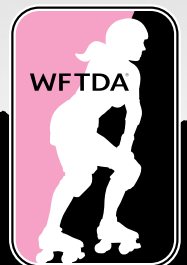
- Participation in international rankings. Comprehensive team rankings and statistics from every WFTDA-sanctioned bout are maintained within the WFTDA archives.

- Strength in numbers. As an association of nearly 200 member leagues and growing, the WFTDA offers sponsors and media access to a network of organized international leagues.

- Safeguarding the future of roller derby. WFTDA policies ensure that member leagues can protect the image and quality of the sport.

WFTDA's mission is to promote and foster the sport of women's flat track roller derby by facilitating the development of athletic ability, sportswomanship, and goodwill among member leagues.

wftda.com



TEAM UNITED ROLLER DERBY



DERBY SUPPLY.net

**15% OFF Online Tournament
Discount**
Enter Code: D2TUCS

Visit one of our locations:



Derby Supply High Altitude
1616 East Pike Peak St
Colorado Springs, CO 80909
(719) 354-4549

Derby Supply Hampton Roads
5265 Providence Road #504
Virginia Beach, VA 23464
(757) 288-8894



****Discount codes are for website purchase only. All codes will be valid through November 14th, 2015



TERMINAL CITY ALL-STARS

Vancouver BC, Canada



Red Sonja 101
 Tekonomy 110
 Sundown 1111
 Jackson 121
 Kim Janna 1223
 BruiseBerry Pie 131



Palmer 16
 Ann O'War 19
 NazDroveya Wylde 191
 Suzi Smokeshow 305
 Eve Hallows 31
 Merdermaid 4

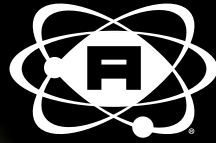


Luludemon 44
 Scarlett Bloodbath 47
 Simonius Smaximus 51M
 Evada Perón 52
 Flower Plow'her 69
 Maiden Sane 88



Green Machine 90
 Griffith (c) MG42
 Mack the Mouth Coach
 Jude Newman Line Caller
 Sammy Trainer

MVP WORTHY! ATOM HELIX



ATOM HELIX
\$399 msrp

WWW.ATOMSKATES.COM

MUTCH MAYHEM
WFTDA MVP
2014



WOMEN'S FLAT TRACK ROLLER DERBY MAGAZINE

 **fiveonfive**™

FIVEONFIVEMAG.COM

PROUD PARTNER OF THE WOMEN'S FLAT TRACK DERBY ASSOCIATION (WFTDA)

TRI CITY

thunder



Andi Slamberg
#0



Fox Hadley
#1013



Rain Blows Brite
#13



Kristy Skelton
#1321



(Captain) AnneX
#14



Honey Badger
#18



Lippy
Wrongstockings #19



Aggrosaurus
#2042



Crazy Squirrel
#231



Anne Tastic
#24



Button
Sewwhatnow #525



Pity Affoo
#711



MEGAnTRON
#84



Fraxxure
#911



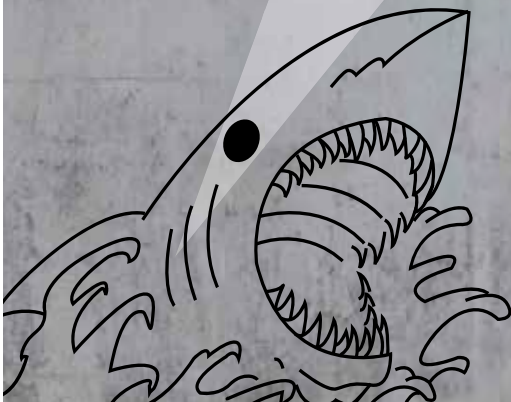
(Alt) Wylde Leigh
Coyote #9TNT



Coach
Dr. Ninja



Coach
Lilith NoFair



Tri-City
ROLLER DERBY

INTRODUCING THE NEW **Riedell**®

R-fit™

Footbed Kit

CUSTOM COMFORT. ENHANCED PERFORMANCE.

SPECIFICALLY DESIGNED FOR ROLLER SKATERS, THE R-FIT™ FOOTBED KIT HELPS TO IMPROVE ALIGNMENT AND ATHLETIC PERFORMANCE, ALLEVIATE PAIN FROM COMMON FIT ISSUES, AND PROVIDES COMFORT WHILE REDUCING FATIGUE.



KIT INCLUDES:

- Footbeds
- Arch Supports
- Heel Wedges
- Heel Lifts
- Metatarsal Pads
- Instruction Guide



CONNECT WITH US



@RiedellRoller

Roller.RiedellSkates.com ©2015 Riedell Skates, Inc.



Chuck
72



Bamma
19



Mick
Swagger



Matt
Clanahan



Bicepsual
10



Mary
Faggdalene
15

VICTORIAN ROLLER DERBY LEAGUE



Christy
Demons
14



PorFavor
222



Iuyk'Niveg
BR0



Bianca
Sciarretta
85



Screw
Paerymore
66



Smashin'
Pop
2



Lorrae
Evans
20



Bone Shaker
38



Tui Lyon
88



Giles
010

Thank You!

THANK YOU TO ALL WHO HELPED PUT ON THIS TOURNAMENT

Tucson Roller Derby wants to say thank you to everyone who has had a hand in making the 2015 WFTDA Division 1 Playoff Tournament in Tucson a success! Thank you to the Skaters, Officials, volunteers, fans, photographers, EMTs, and more - there is no way we could do this without each of you!!

SKATING OFFICIALS

HEAD SKATING OFFICIAL: DJ Jazzy Ref

Allyn UR Grill
Bob Lloyd
Bruise Almighty
Cherry Fury
Collin DeShotz
Cruel Hand Luke
Davie Darko
Dire Wolff

Dizzy Duzher
Duke Skellington
Eric RAWK
ERMAHGARD, RERFERER!
Freddy Mercury Poisoning
Harm N. Killabrew
Harry Spot'er
Jesse Jackass

Jon Dilks
Jonny Demonic
Matthew Mantsch
Rage Appropriate
Sir Osis
Umpire Strikes Back
William Maullace
ZDORK

NON SKATING OFFICIALS

HEAD NON SKATING OFFICIAL: Intejill

Alicia Teaze
Allyaz Stoned
Amelia Dareheart
Buenas Tardis
Bustah Mugg
Chanel No. Die
Chiro-Fracture
Darby O'Kill
Delilah Decider
Dis'nTerry
Doogie FoulzHer
Fantasmic
Fickle Bitch

Goblin King
Hey-Zeus
Izzy Pop
Jenn-I-Fear
Julius Freezer
Lady RingHer Bellum
Lasseration
Los Angry-Lez
LuAneurysm
Majer Malfunction
Mask Her Raid
Mike SumNoyz
N. Vaidya Space

Nine Inch Wheels
Plenty O'fficial
Reed d'Rulz
Shady Hawkins
sHellcat
Supergirl
Sweetie Pi
Teapotahedron
Tenacious D Cup
theMadStatter
Torquemama
Wizard of Laws



DID YOU KNOW? MORE FACTS ABOUT TUCSON

With 350 days of sunshine a year, Tucson is literally the sunniest city in the United States. Aside from the Amazon Rainforest, Tucson is home to more bird species than any other region on earth. Tucson is smack in the middle of the world's largest concentration of saguaro cacti.

The name "Tucson" comes from the name given to Sentinel Peak ("A" Mountain) by the O'odham Tribe, Ts-iuk-shan, which basically meant that it had a base darker than its top. "A" Mountain was said by Spanish settlers and O'odham people to be used as a lookout point by Apache raiders, hence the modern name "Sentinel Peak."

ANNOUNCERS

HEAD ANNOUNCER: Kasey Bomber

WFTDA DIRECTOR OF
BROADCAST OPERATIONS: Double H

BROADCAST ANNOUNCERS VENUE ANNOUNCERS

Kasey Bomber
Tara Armov
Sexy Beast
Derby Nerd
Hammer Abby
Prof. Lou Botomy
Double H

Val Capone
Justincredible
Pass'da Mic
Chloroform Cupcake
This American Strife
Postal Servix

THINGS TO DO IN TUCSON

Learn about the biodiversity of the Sonoran desert and see live plants and animals at the **Arizona-Sonora Desert Museum** (www.desertmuseum.org).

You can see a bunch of miniatures at the **Mini Time Machine Museum of Miniatures** - weird, right? (www.theminitimemachine.org).

Definitely check out **4th Avenue!** They have a bunch of eclectic shops and lots of good food (www.fourthavenue.org).

Bond with your team in Tucson's only live escape room, **Will You Escape?** (www.WillYouEscape.com).

Check out the University of Arizona's **Biosphere 2** - the largest living science center on the planet! Well besides Biosphere 1, which is the Earth itself (www.b2science.org).

Tour the **Mission San Xavier del Bac**, a historic Spanish Catholic mission located about 10 miles south of downtown, on the Tohono O'odham San Xavier Indian Reservation (www.sanxaviermission.org).

Within a 1-2 hour drive, you can explore more of the Old West in the towns of **Tombstone** and **Bisbee, AZ**. And if you have your passport, you can visit **Sonora, Mexico**, less than one hour away!

Check out www.visittucson.org for a more extensive list of things to do in Tucson.

WFTDA-RECOGNIZED TOURNAMENT PROGRAM

Apply today for the all new WFTDA-Recognized Tournament Program, recognizing and supporting high-quality WFTDA-Member hosted tournaments worldwide.

QUALIFYING TOURNAMENTS BENEFIT FROM:

- Recognition and use of the WFTDA-Recognized Tournament tagline
- A package of WFTDA Marketing support and promotion to be determined annually
- Participation in special educational programming
- Consideration for WFTDA.tv Live Streaming Application

**APPLY TODAY! 2015 DEADLINE EXTENDED TO SEPTEMBER 30.
VISIT WFTDA.COM/EVENTS FOR MORE INFO.**

IMPORTANT PROGRAM DATES:

- **JUNE 1:** Opening date for applications for the following year
- **SEPTEMBER 1:** Deadline for applications to make the annual announcement and Championship promotion. Decision made by October 1
- **WFTDA CHAMPIONSHIPS:** Announcement of WFTDA-Recognized Tournaments for the following year
- **DECEMBER 1:** Decision made by January 15
- **MARCH 1:** Decision made by April 1



SIN CITY SKATES



Photo c 2012 George Medina

info@sincityskates.com



Get the right gear for YOU, even if you're not sure what it is.

We have combined 24 years of current, active roller derby experience and knowledge to help!